

S.G. No 3015/2015
 APPROVED
 for SURVEYOR GENERAL
 2016-01-13
 APPROVED IN TERMS OF SECTION 25 OF
 ORDINANCE 15/1995
 REFERENCE: 18/6/4/150 DATE: 02/10/2013
 EXEMPT FROM THE PROVISIONS OF
 ACT 70/70, SECTION 1(a)

ENDORSEMENTS			
No	AMENDMENT	ADDITION	AUTHORITY

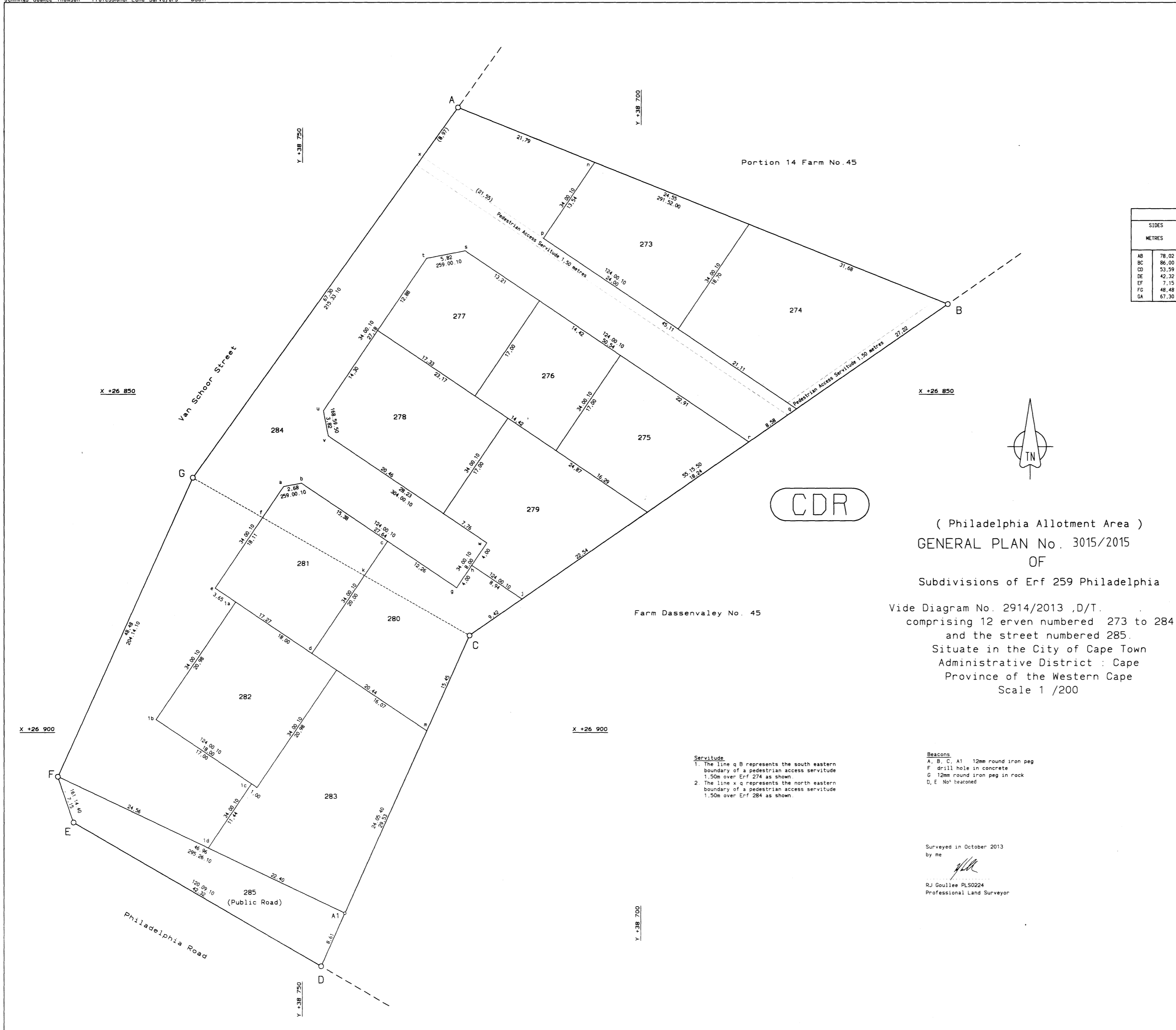
MAIN FIGURE					
SIDES	METRES	ANGLES OF DIRECTION	CO-ORDINATES SYSTEM No 19		
			Const	Y METRES	X METRES
AB	78.02	291 52 00	A	+ 38 727.07	+ 26 807.58
BC	86.00	55 15 50	B	+ 38 654.66	+ 26 836.64
CD	53.59	24 05 40	C	+ 38 725.33	+ 26 885.64
DE	42.32	120 09 10	D	+ 38 747.21	+ 26 934.56
EF	7.15	161 14 40	E	+ 38 783.80	+ 26 913.30
FG	48.48	204 14 10	F	+ 38 786.10	+ 26 906.53
GA	67.30	215 33 10	G	+ 38 766.20	+ 26 862.33

TOWN SURVEY MARKS		
⊕	28532	+ 38 824.57 + 26 742.83
⊕	48K32	+ 38 607.17 + 26 661.57
BLOCK CORNER		
A1	+ 38 743.69 + 26 926.70	

AREAS		
ERF NUMBER	SQUARE METRES	REASONS PLACED VIDE SR No
273	387	
274	557	
275	333	
276	245	
277	286	
278	390	
279	406	
280	413	
281	344	
282	378	
283	586	
284	2242	
285 PR	301	

Note:
 PR denotes Public Road

S.G. OFFICE NOTES



CDR

(Philadelphia Allotment Area)
 GENERAL PLAN No. 3015/2015
 OF
 Subdivisions of Erf 259 Philadelphia
 Vide Diagram No. 2914/2013 ,D/T.
 comprising 12 erven numbered 273 to 284
 and the street numbered 285.
 Situate in the City of Cape Town
 Administrative District : Cape
 Province of the Western Cape
 Scale 1 /200

Servitude
 1. The line q B represents the south eastern boundary of a pedestrian access servitude 1.50m over Erf 274 as shown
 2. The line x q represents the north eastern boundary of a pedestrian access servitude 1.50m over Erf 284 as shown

Beacons
 A, B, C, A1 12mm round iron peg
 F drill hole in concrete
 G 12mm round iron peg in rock
 D, E No beacons

Surveyed in October 2013
 by me
 RJ Goulee PLS0224
 Professional Land Surveyor

S.G. FILE No: Cape 45 vol2
 S.R. No: 1376/2013
 COMPILATION: BH-6CA/41 1874)
 LPI CD160044